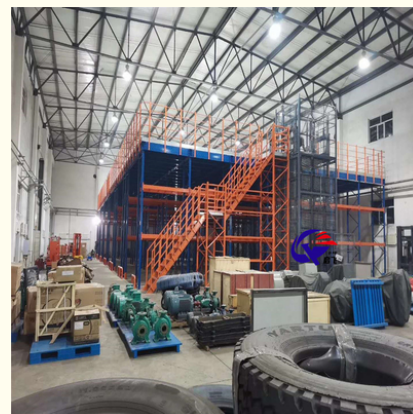




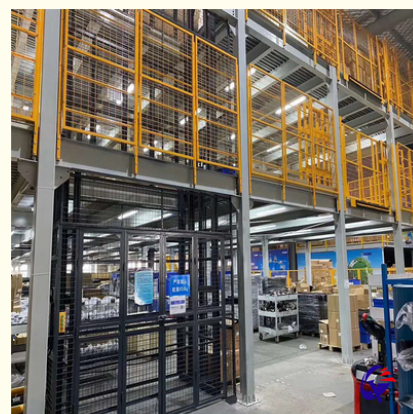
Industry Heavy Duty Mezzanine Floor Multi Level Racking with Height 5-15m

Basic Information



Product Specification

- Model NO.: P003
- Material: Steel
- Structure: Rack
- Type: Multi-Level Racking
- Mobility: Fixed
- Height: 5-15m
- Closed: Open
- Development: Conventional
- Serviceability: Common Use
- Color: Customized
- Lead Time: 25 Days
- Raw Material: Q235
- Surface Treatment: Powder Coating
- Transport Package: Standard Export
- Specification: 500-2000 Square Meter



More Images



Our Product Introduction

for more products please visit us on warehouse-rackings.com

Product Description

Product Description

QiFei Mezzanine floor/Steel platform:Also called working platform.

Structural design is flexible, safe and reasonable, with superior strength and stability.

Biggest feature is fully assembled structure (no on-site welding required).Use shelves as floor supports to expand the space to obtain maximum inventory capacity when the area is limited.

Generally shelving to be designed as 2-3 floors,with staircase, handrail, safety barrier, goods slide, goods elevator and lifting platform can be configured. Each structural component of the platform is cold-bent pickled and phosphated, electro-statically sprayed, and has a beautiful appearance.

Shelves and platform combined freely, Convenient installation and disassembled

Compose kinds of storage modes

High quality cold rolled steel, quality guaranteed, recyclable

Suitable for high warehouse, light goods, manual access, many varieties of goods, and high quantity of good

Length Adjustable

Width Adjustable

Height Adjustable

Material Q235B

OEM&ODM Available

Surface Treatment Galvanized/Powder Coating

Color Customized



LARGE LOAD CAPACITY



COMBINED FREELY

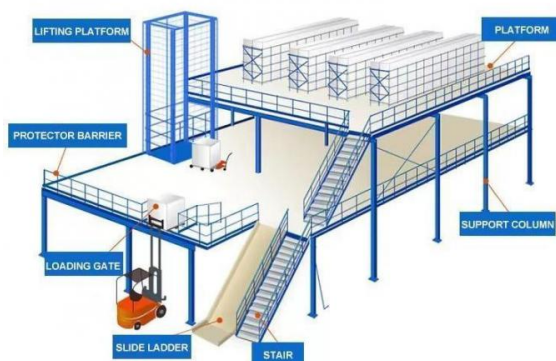


HIGH SPACE UTILIZATION



CONVENIENT INSTALLATION

Detailed Photos



STAIRS AND HYDRAULIC LIFTING PLATFORMS

The lifting platform is used to transport goods up and down between floors, with a large practical carrying capacity. Smooth lifting and lowering, reducing manual handling, and slides can be configured according to needs.



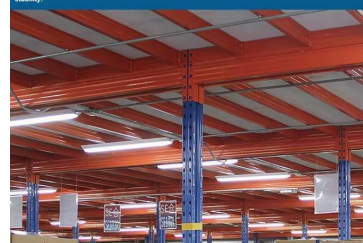
FLOOR BOARD BEAM

Floor board + bottom support frame, smooth and stable, miller-groove and moisture-proof, with strong load-bearing capacity.



BEAM

Complying with mechanical design, each position has been calculated and measured to ensure outstanding load-bearing capacity, safety and stability.



MEZZANINE PANELS

Cold rolled steel is strong and stable, with a textured surface. The surface is textured, which increases the friction and prevents slipping and falling. The steel is impact-resistant, load-bearing and protected against corrosion in accordance with international standards.



COLUMN

The cross beams on both sides are hung on the columns and fixed with safety pins for a higher safety factor.



Choose the wood plywood, lacquering board, mesh board with punched holes, galvanized board (more details, please consult customer service)



Packaging & Shipping



Package for Upright Frame



Package for Beam



Loading for Beam



Loading for Upright Frame



Loading for Wire Mesh Cage

Company Profile

Jiangsu Qifei Intelligent Storage Equipment Co., Ltd., established in 2020, is one of the leading manufacturer which specialized in designing & manufacturing industrial warehouse storage racks, automation warehouse system and professional logistics equipment, we aim to provide cost-effective and space utilization storage solutions for all customers worldwide .

We have powerful R&D teams, including 8 experienced design engineers.

Qifei's workshop equipped with 6 automatic production lines of rolling and curved steel and two static powder coating lines, which ensures the high quality of our products. All our products and operation are ISO:9001 certified, and all our racks / shelving are approved by SGS company.

Our main products are heavy duty rack, medium duty rack, light duty rack, cantilever rack, mezzanine floor, drive in rack, and so on.

Welcome to visit our company.



FAQ

Q: Are you manufacturer or trading company?

A: We are experienced manufacturer in the warehouse storage industry.

Q: How is your delivery time?

A: Generally, it is within 25 days against formal order and deposit. It also depends on other factors such as order quantity.

Q: What is the payment term?

A: T/T 30% as deposit, and 70% before delivery. We'll show you the photos of the products and packages before you pay the balance.

Q: What is your terms of delivery?

A: EXW, FOB

Q: Are samples available?

A: Yes, We can supply the sample if we have ready parts in stock, but the customers have to pay the sample cost and the courier cost.

Q: What is the minimum order quantity?

A: Generally, MOQ is 10sets.

Q: Can I make my own brand and designed products?

A: Yes, we do both OEM and ODM, so you can make your own product with your own logo.

Q: Where is your factory? Can I visit it?

A: Our factory located in Nanjing, Welcome to visit our factory. We can arrange pick-up from the airport or train station for you.

Q: What parameters do I need to provide for an accurate quotation?

- 1) Quantity(set)
- 2) Size: Length*Width*Height (mm) or samples or technical drawings
- 3) Load capacity per layer(kg)
- 4) Number of layers

Q: What is the material being used for your products?

A: Mild steel Q235.

Q: I don't have drawing or picture available for the products, could you design it for me?

A: Yes, we can make the best suitable design for you but need to know more details.

Q: Do I get any guarantee from your company?

A: 3~10 years warranty

Q: How do you make our business long-term and good relationship?

A: Quality makes trust and reputation, plus competitive price to ensure our customers benefit ;





+86-15161451461



sharonyan@qifeirack.com



warehouse-rackings.com

Add: #739 Dixiu Road Jiangning District Nanjing China